



TCM-MA32P

32Ch Network I/O Matrix Audio Alarm

Description

The **TCM-MA32P** is an alarm system terminal device that functions as a PAGA (Public Address General Alarm). There are 32 alarm inputs that can be directed to the desired IP speaker with audio information that has been created in MP3 format. To work properly the TCM- MA32 must use the TCM-5000+ device. whatever. The input is triggered by the alarm source from the MCFA Fire alarm, Smoke detector, Air Flow or any early warning alarm source. Compatible with 3rd party Video Management System [VMS] software that has Artificial Intelligence [AI] features through digital output, the CCTV camera will send alarm data to the speaker according to the destination in the form of a sound that has been stored. The compact model can be installed on a rackmount server.

Spesification

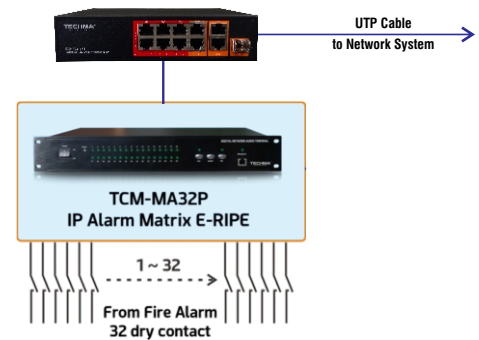
Model	TCM-MA32P
Network Protocol	SIP
Network Interface	10/100M Base Rj45
Configuration	by Software
Alarm Input/Output	32 port/1 port
Operating Tem.	-10 ~ 55°C
Power Consumption	20 Watt
Power Supply	Internal 220V 50Hz
Dimention	485x230x70 mm

TCM-MA32P

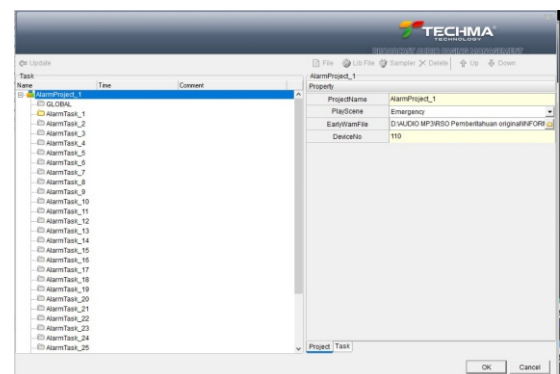
Features

- 10/100Mbps Network Rj45-T Base
- TCP/IP Network Protocol
- PAGA, Alarm Function
- 32ch dry contact input, 1ch Relay output
- 3rd party MCFA Alarm input, smoke detector & other device alarm inputs
- 3rd party VMS integration

Topology



Software Setup



Supporting Others Product Models :

- TCM-A300+S Series - Audio Paging Manager
- TCM-BGM5000+ - Network Audio Broadcasting Manager